



**We are
HERE to
help your
BUSINESS
grow!**





Endless Possibilities

Maskam Water® is an industry leader in alternative water solutions. We specialize in rainwater harvesting, greywater systems, onsite waste water treatment, eco-friendly koi, pond & pool water treatment.

We are the sole importers and distributors of leading international brands such as:



PLUMBERS

Let us help you to grow your business by adding sustainable water solutions to your product offering!

We are expanding our national footprint.
WE NEED YOU!

Preventative Measures



Sewage Backflow Preventer

Protects your property from flooding when municipal sewage lines block.

Unique feature:

- Full bore design
- No restriction the flapper-design with o-ring ensures a 100% tight seal.
- Variety of installation depths possible.

Available in:

75,
110
&
160mm

Full-Flow Unichecks (Cast Iron)

Best check valve for pumping dirty water and wastewater

- **Non-clog design** - Designed not to clog when pumping solids or dirty water.
- Full flow design - no restrictions
- Horizontal & vertical installation possible
- Corrosion-resistant powder coated epoxy finish
- Neoprene polyester reinforced flapper
- The 40mm unit will easily handle 40mm solids, while the 50mm unit will pass a golf ball with ease

Available in: 40mm, 50mm & 75mm



Quiet Check Valve

Protect your pump by providing reliable backflow prevention.

Benefits:

- Eliminates water hammer
- Ideal for use with swimming pool pumps (allows visibility of dirty flow)
- Reduces motor and pump noise from plumbing system
- Designed for both horizontal and vertical usage
- Full-flow, non-clog design installation
- 3.5 Bar pressure rating
- Passes 40mm solids
- Spring loaded and non spring handling models available



Available in Clear Clamp on for 50mm pvc or 40mm LDPE pipe, or White Glue in for 50mm PVC pipe

Preventative Measures

UV Water Treatment - for Domestic and Commercial applications

Why UV treatment is important

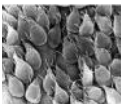
UV purification destroys bacteria, viruses and other microorganisms.

It can also de-chlorinate water.

Pathogens like Cryptosporidium are unaffected by chlorine, but UV treatment takes care of all pathogens.

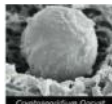
Why use UV for disinfection?

- UV-C is 99,99% effective against all microorganisms
- UV-C is a safe, reliable and sustainable way to disinfect
- UV-C adds nothing to the water and so does not form any by-products.
- UV-C can be used for ponds, pools, potable water as well as process water



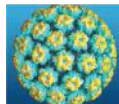
Giardia

Causes severe diarrhoea



Cryptosporidium

Causes severe diarrhoea



Papilloma Virus

Causes Plantar warts (verrucae)



Pseudomonas

Causes ear, eyes and urinary tract infections



Shigella

Causes dysentery



E-Coli

Causes severe gastric illness

Ponds, Horticulture & Aquaculture



xclear
UV-C & FILTERS

Air & Surface Disinfection



VGE PRO
UV DISINFECTION SOLUTIONS

Swimming Pools & Spa's



Blue lagoon

Professional / Industry



VGE PRO
UV DISINFECTION SOLUTIONS



Have a reliable solution to keep your client's water safe



- Environmentally friendly
- Cost-efficient
- Efficient and effective

**No chlorine
No salt**



Onsite Waste Water Treatment

Fusion Wastewater Treatment System

Is your client thinking of reusing ALL of their wastewater? Then they NEED a Fusion.

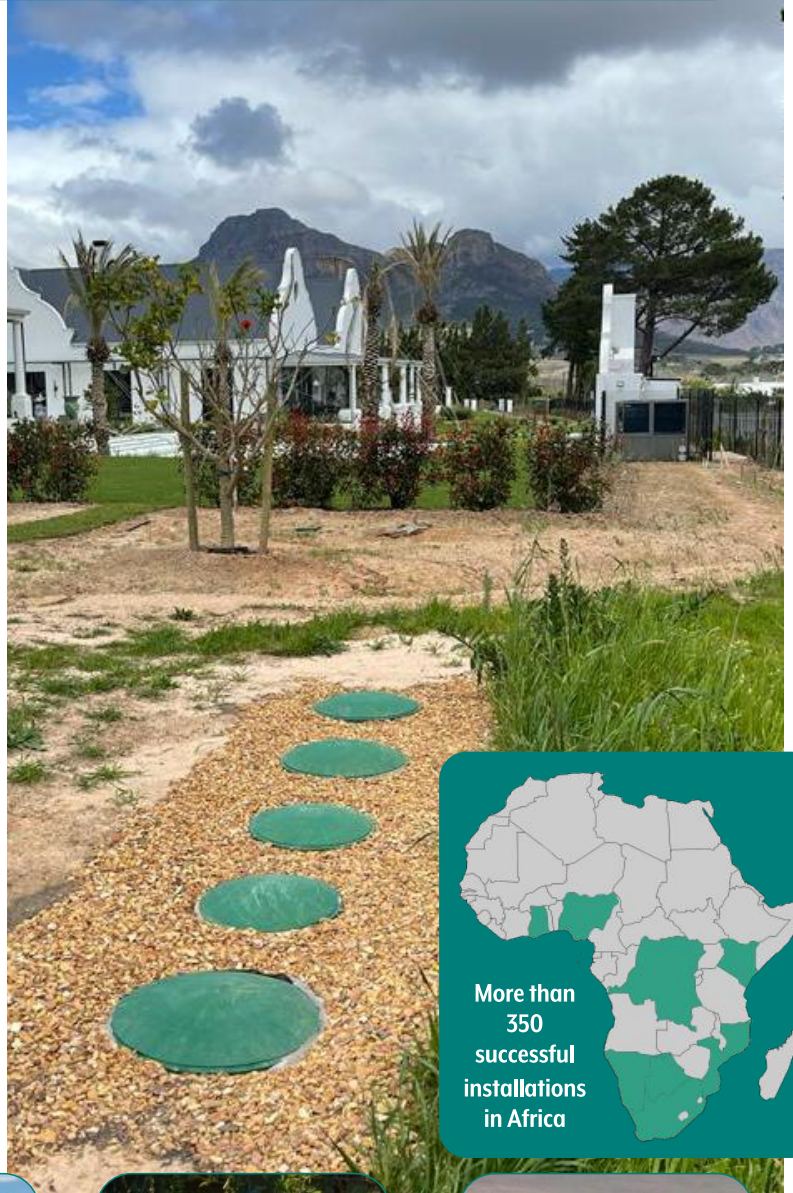
Treat and reuse ALL of your water onsite for toilet flushing and garden/sportsfield/crop irrigation.

Benefits of installing a Fusion Wastewater Treatment System:

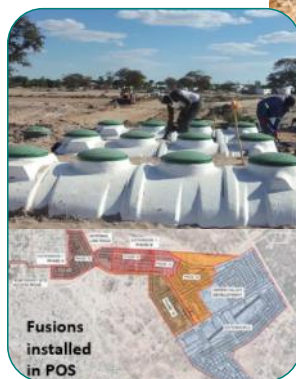
- Installed underground so NO SPACE LOST
- Low power consumption
- No odour
- Low noise factor
- Easy installation and low maintenance (once every six months for an hour)
- Client saves money on their municipal bill because they use less fresh water from the municipal supply.

Lowest operating cost in it's class

Built for urban and rural applications.



Department of
Environmental Affairs
and Development
Planning - Cape Town



Katima Mulilo
Namibia



Synergy Groove
Restaurant
McGregor



Barloworld
Maputo



SOLAR options available



Doing our share with

#SURPLUS WATER[®]
2025



Greywater Treatment



Greywater System

The Maskam Water® Greywater system treats greywater for non-potable use such as toilet flushing and garden irrigation. Fully assembled system is ready to be dropped in onsite! Can incorporate pool backwash and rainwater harvesting. Biological treatment is happening inside the tank to ensure a better quality water.



Why install a Maskam Water® Greywater System?

- Reduces water usage - Domestic and Small Commercial use
- Can be linked to your existing irrigation system
- Treated greywater will not clog pumps & sprinklers
- Air pump keeps water fresh
- **No foul odour**
- Easy to clean filter
- **Low maintenance**
- Space saver! Installed underground so only the green lid is visible



Automation

Steadypres VSD

The Comfort
of Constant
Pressure

Energy Saving
up to 30%

Inline Water
Cooled

Easily Removable
Check Valve
(For Service Operations)

Solar- and
Inverter Friendly
- due to lower
in-rush current

Longevity
of pump
system



ENERGY SAVING UP TO 30%

Benefits:

- Comfort of constant pressure
- Simplified installation
- Vertical or Horizontal installation possible
- For single pumps and booster sets
- Check Valve built in - Easily removable check valve for maintenance and cleaning
- Solar and Inverter friendly, due to lower in-rush current
- Spare parts available so no need to replace entire system
- Water cooled (no cooling fan required) – quiet and energy efficient

Available in

Single Phase to Single Phase 1.1kW 8.5A Max
Single Phase to Single Phase 1.5kW 11A Max
Single Phase to Single Phase 2.0kW 16A Max

Single Phase to Three Phase 1.5kW 7A Max
Single Phase to Three Phase 2.2kW 12A Max

Three Phase to Three Phase 2.2kW 6A Max
Three Phase to Three Phase 3.0kW 8A Max



Automation



Presflo Vario

I protect your pump!

- Overcurrent protection
- Adjustable start-up pressure
- On/off key on front panel
- Union included
- 16A rated
- Dry run with auto restart
- Replaceable pressure gauge
- Replaceable electronic board
- Spring loaded check valve
- [Removable check valve for cleaning](#)
- Horizontal installation possible
- Protection against excessive frequent starting

Type: Pressure-Flow Switch ▪ **Pump Control: Fixed Speed**
Mains Supply: Single-Phase ▪ **For Single-Phase pumps up to 1.5kW**



Float Switches

When accuracy matters!

Vertical FS – for when accuracy matters
Adjustable on/off range from 20mm – 200mm

Fixed installation height

13 Amp inline

Installation possible with limited space

Cannot get entangled in wiring

10-1881

Specifically designed for sewer applications
It will not float on top of the scum layer



ADJUSTABLE
WEIGHT TYPE



CLAMP TYPE

Pumping / Transfer Solutions

Sumps & Lifting Stations



Ribbed Design

- Increases structural strength
- Prevents popping out in high water conditions

Can be used as a service point for cable or fiber joints

Transfer of sewage, rainwater, stormwater, greywater, etc

Perfect for applications where dewatering is required

Available in: Medium Duty / Heavy Duty



Centrifugal STEP System



Can be used on construction sites, in factory sumps, in septic tanks, stormwater pits – to name a few.

Protects your pump when pumping dirty water. Prefilters up to 1.7mm through pleated filter.

Pleated filters can filter large amounts of water at a high flow-rate without causing a drop in the water pressure.

The Centrifugal STEP system is easy to clean. Simply remove it and hose down with a hosepipe.

Any Zoeller Sump Pump can be fitted to the system



Gravity Solutions

Turbine STEP Vault

Where high end pumping is required!

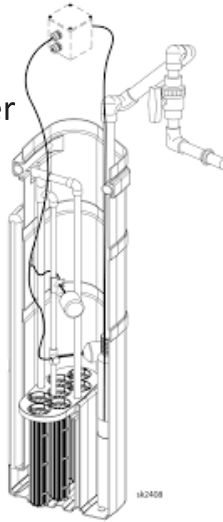
Eliminate the need to install an additional pump tank!

The economical way of adding a filtered pump chamber to an existing single compartment tank.

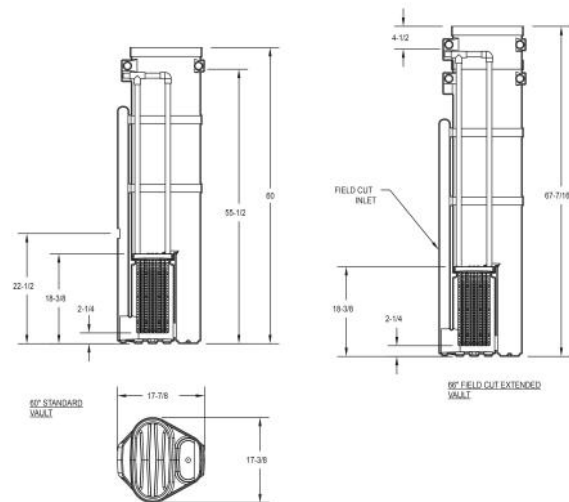
Vault heights from 130cm to 305cm. All vaults fit in an 45cm septic tank opening.

Designed to accommodate any 4" borehole pump.

Prefilters up to 1.7mm through pleated filter.



Large filter area protects effluent pumps in even the dirtiest septic tank.
Deep pleated design is easy to clean.



Septic Tank / Effluent Filters

Removes solids from wastewater before it enters into a sewer line/French drain.

Allows for cleaner and more clear effluent to exit the tank.

Applications: Septic tanks, sumps with gravity flow to sewer line, stormwater/rainwater harvesting, greywater systems
Can also be used as a separation filter, removing leaves from rainwater in a catchment area.



WW1 Effluent Filter
Daily flow up to 6 m³/day.

1.7mm
pleated filter

WW4 Effluent Filter
Daily flow up to 20 m³/day.

Qwik Jon Ultima



The Ultimate Bathroom Grinder Pump

ZOELLER
PUMP COMPANY



Tampons



Condoms



Rags



Denim



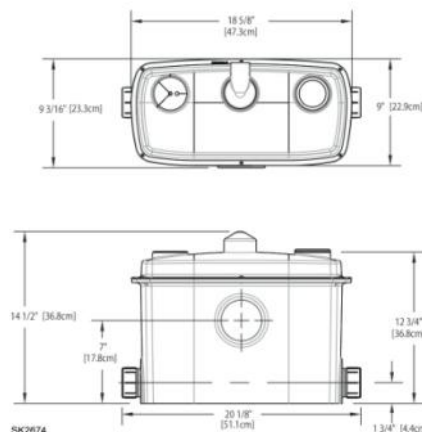
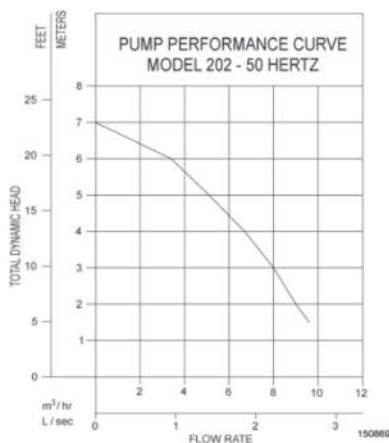
Toilet Paper

This bathroom grinder pump is guaranteed to grind up and pump all of these items



If you buy a QwikJon Ultima and it fails to grind and pump ANY of the above items, we will give you all your money back*

*This guarantee is only valid if the pump is used within its designed pumping head and limited to the purchase price of the item.
Excluded materials: Glass, Plastic, Ceramic, Metal, Stone, Wood, Steel, Fishing line



Dewatering / Sewage / Effluent Pumps



What makes Zoeller pumps superior to other pumps?
84 years of DEPENDABILITY

QUALITY OVER PRICE POINT

- Each and every pump is factory tested before shipping
- Durable cast iron construction - Dissipates motor heat for longer lasting life
- Corrosion-resistant, powder coated epoxy finish
- Industry-proven switch technology – auto pumps
- Non-clogging vortex impeller - Reduces seal fail
- Provides reliable, consistent performance
- Bottom suction intake design

Zoeller manufactures a wide range of residential and commercial pumps and accessories to provide the best solutions for moving wastewater and effluent. With 100% factory testing, NO ONE matches this level of dependability.

Solid Buoyant Float

- No external control panel required
- Will work even with a hole drilled through the float
- No wires or cables to get entangled
- Operates vertically on own shaft



With a reputation for producing high performing, quality products, Zoeller has a rich heritage based on 'Made in USA' Manufacturing. Although it has expanded over the years, the company still manufactures products at its original location in Louisville, KY. Even today, over 95% of Zoeller Pump Company's branded products are made in the USA using a majority of US content.



EVERY PUMP is 100% pressure tested, submerged in water and run before leaving the factory to ensure quality and reliability

Speciality

Disc Diffusers



Disc diffusers produce smaller bubbles, therefore offering a greater bubble surface area for oxygen transfer.

Ideal For:

- Ponds
- Greywater systems
- Wastewater treatment
- Water treatment
(including heavy metal removal)

Air Pumps



We have a wide range of airpumps that can be used together with our Disc Diffuser.

- Durable
- High efficiency
- Compact and powerful
- Low power consumption
- Low noise factor
- Smooth air flow
- Easy to maintain

Ideal For:

- Ponds
- Greywater systems
- Wastewater treatment
- Water treatment
(including heavy metal removal)

MultiZone Valve



Multizone Valves offer an easy, reliable, and non-electrical way of diverting flows to multiple applications, such as irrigation zones, hydroponics etc.

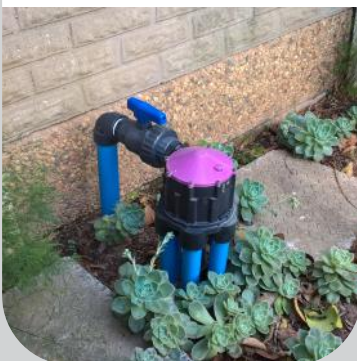
Can split flows to 2, 3, 4, 5, or 6 zones powered only by pumped sewage.

Patented for its ability to supply multiple zones of change between multiple zones with only one moving part, the multizone valve offers exceptional durability.

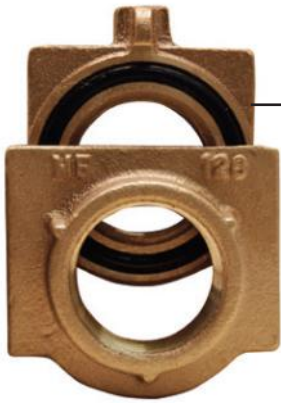
- Easy to install
- Easy to maintain
- Exceptional reliability

***Household model (4000 series) is plastic

***Heavy duty model (6000 series) is non corrodible, die-cast metal housing



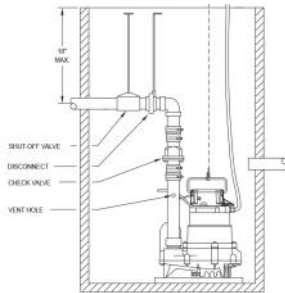
Speciality



Quick Disconnect

**Reduce the time and cost of removing a pump
(Shallow pump)**

- Easy sump pump removal without using any tools
- Safety - keeps personnel out of pits and out of contact with contaminants
- Inspections made quickly and easily
- Brass, non-corrosive in the septic environment



Rail Systems



**Reduce the time and cost of removing a pump
(Deep sump/Manhole)**

- Sewage, storm water and effluent pump systems
- For concrete, steel, or fiberglass tanks
- Allows for removal of pumps from ground level
- No confined space entry to service pump
- Disconnect fitting with positive machine fit and o-ring seal provides a reliable seal.
- Guide rails direct the pump to and from the disconnect fitting.
- Systems are supplied complete with disconnect fitting, guide plate, rail guide, and upper rail support bracket.

Pumps to take note of



Zoeller 508 Battery Backup

Real time peace of mind

Ideal for the contractor constantly on the move

- Backup pump
- 12 Volt sump pump.
- Fully automatic, and industry best performance and efficiency.
- Highly efficient
- Integrated check valve
- Quick disconnect discharge
- Efficient design means more water pumped during emergencies

Can work off a solar & battery systems.

Zoeller Utility Pumps Model V42



Struggling with customer homes that are flooding during the rainy season?

Then we have the solution for you!

- Perfect to remove water from flooded houses, to empty swimming pools for repairs , lift shafts etc.
- Can be used to transfer groundwater.
(Draw down to 3mm)
- They are extremely useful for transferring unwanted water away from building foundations, basements, and work areas.
- Each pump is built using non-corrodible materials - ensuring a long service life.
- Verticle Float switch for automatic dewatering application



Zoeller Pump Models

** All models with 4-digit model numbers are double seal pumps

Application	Pump model		
	Single Phase with float switch	Single Phase without Float Switch	Three phase without float switch
Utility		V42	
	LU44	V44	
		V47	
Sump Effluent Stormwater Rainwater transfer 12 - 19m solids handling	U49	V49	
	U70	V70	
	U53	V53	
	U72	V72	
	U86	V86	
	U88	V88	
	U98	V98	
	U137	V137	AK137
		V140	
		V4140	
		V145	
		V4145	
	U152	V152	
	U153	V153	
	U161	V161	AK161
	U162	V162	AK162
	U163	V163	AK163
	U165	V165	AK165
	U185	V185	AK185
	U189	V189	AK189
Sewage Stormwater Rainwater transfer 50mm solids handling	U222	V222	
	U264	V264	
	U266	V266	
	WU270	V270	
		V4270	
	WU271	V271	AK271
		V4271	
	U280	V282	AK282
	U292	V292	AK292
	U293	V293	AK293
	U294	V294	AK294
Grinder, single direction	U803	V803	
	U805	V805	
	U807	V807	
		Z815	
		V818	AK818
		V819	AK819
		V820	AK820
Grinder, with auto reverse option		V840	AK840
		V841	AK841
		V842	AK842
Evaporative cooling Continuous duty rated		V371	
		V372	
		V373	
Agriculture		V4292	AK4290
		V4291	AK4291
Bathroom grinder	QwikJon Ultima 202		

Oil Guard (factories, workshops, etc) - Oil Guard options are available with all V-type pumps

Energy-Efficient Pressure Pumps



We have a variety of **CITY PUMPS** for your needs, be it domestic, commercial or agricultural.



MS08 & MS10 - Multi-Stage Self-priming Centrifugal Pumps

Installation: Suitable for use with clean water

Use: Rainwater harvesting / Irrigation / Backup water supply / Greywater systems

Most energy-efficient, self-priming pump available!

Pump model:	Duty point		Power P2	Energy Efficiency Rating
	Pressure (bar)	Flow (lpm)		
MS07	2,5	45	1/2hp	IE3
MS08	3	48	3/4hp	IE3
MS10	3	80	1hp	IE3



Self-Priming



Reliability



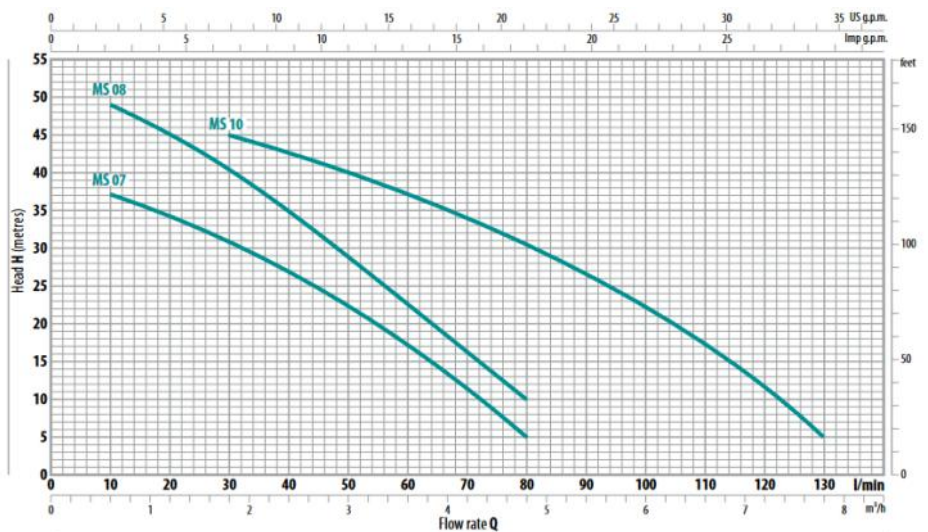
Robust



Stainless Steel Casing



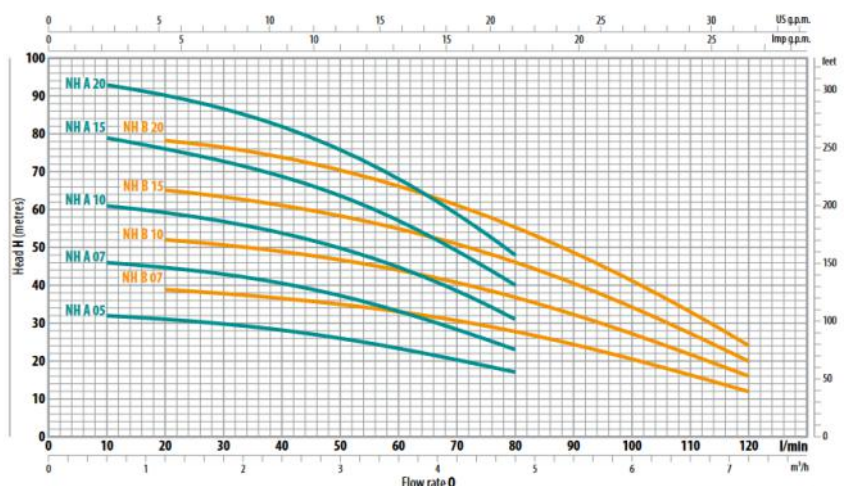
Low Decibels



NH - Multi-Stage Submersible Pumps

Installation: High efficiency and reliability, they are the perfect addition to use with clean water in domestic, civil, and agricultural applications.

Use: Irrigation of gardens and orchards / Excellent backup in times of power outages / Pressure boosting



Bottom intake ensures maximum water usage from tank. VSD compatible.



Reliability



Robust



Stainless Steel Casing

The CITY PUMPS range can supply a pump for every specific water need. We can help you source the best pump to work effectively for you, and supply you with all the specifications on these pumps.



Energy-Efficient Pressure Pumps



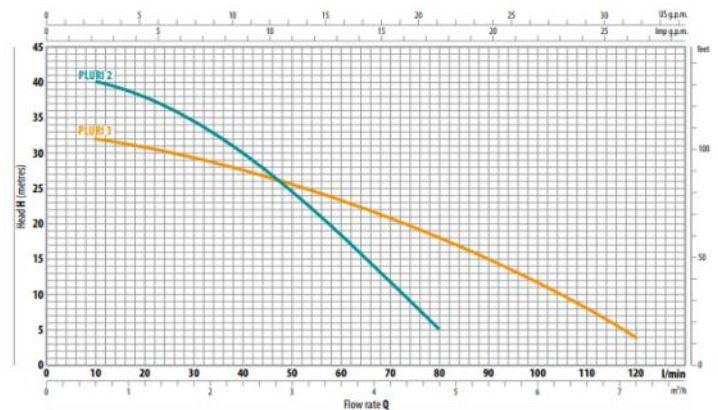
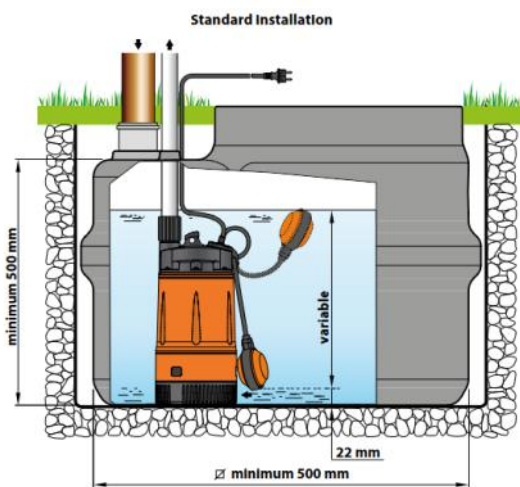
We have a variety of **CITY PUMPS** for your needs, be it domestic, commercial or agricultural.



PLURI 2 & PLURI 3 - Submersible Multi-Stage Pumps

Installation: Pluri Pump have a high efficiency and are reliable.

Use: Domestic water supply from reservoirs / Tanks or relatively deep wells / Irrigation systems



MODEL	POWER (P ₂)		Q															
Single-phase	kW	HP	m ³ /h	0	0.6	1.2	1.8	2.4	3.0	3.6	4.2	4.8	5.4	6.0	6.6	7.2		
PLURI 2	0.55	0.75	l/min	0	10	20	30	40	50	60	70	80	90	100	110	120		
				42	40	38	34	30	24	18	11.5	5						
PLURI 3	0.55	0.75	H metres	33	32	31	29.5	28	25.5	23	20.5	18	15	12	8	4		

Q = Flow rate
H = Total manometric head

Tolerance of characteristic curves in compliance with EN ISO 9906 Grade 3B.

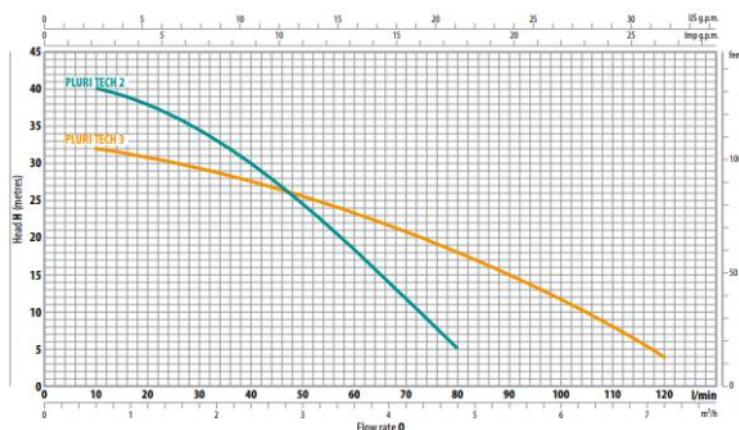
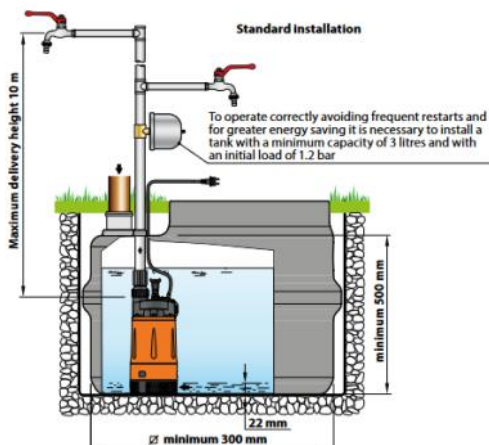


PLURI TECH 2 & PLURI TECH 3 - Multi-Stage Automatic Submersible Pumps

Installation: Pluri Tech have a high efficiency and are reliable.

Built in Pressure sensor and flow sensors. (Auto Start at 1.5 bar)

Use: Domestic water supply from reservoirs / Tanks or relatively deep wells



MODEL	POWER (P ₂)		Q															
Single-phase	kW	HP	m ³ /h	0	0.6	1.2	1.8	2.4	3.0	3.6	4.2	4.8	5.4	6.0	6.6	7.2		
PLURI TECH 2	0.55	0.75	l/min	0	10	20	30	40	50	60	70	80	90	100	110	120		
				42	40	38	34	30	24	18	11.5	5						
PLURI TECH 3	0.55	0.75	H metres	33	32	31	29.5	28	25.5	23	20.5	18	15	12	8	4		

Q = Flow rate
H = Total manometric head

Tolerance of characteristic curves in compliance with EN ISO 9906 Grade 3B.



Reliability



Robust

The CITY PUMPS range can supply a pump for every specific water need. We can help you source the best pump to work effectively for you, and supply you with all the specifications on these pumps.



We have solutions to help you solve your customers' problems.

Visit maskamwater.com/products

Contact Us

info@maskam.co.za

or visit

www.maskamwater.com

