



WELCOME TO
**RYNFIELD
BUNNY PARK**

OPEN HOURS
MONDAY TO SUNDAY AND PUBLIC HOLIDAYS
08h00 to 16h00
Tel: 011 999 4650/4078 Fax : 011 921 2322

CONDITIONS OF ENTRY

THIS FACILITY IS USED AT OWN RISK AND THE EKURHULENI METROPOLITAN MUNICIPALITY SHALL NOT BE HELD LIABLE FOR ANY INJURY OR DEATH SUFFERED DURING THE VISIT OR FOR ANY LOSS OR DAMAGE TO POSSESSIONS



RIGHT OF ADMISSION RESERVED



www.ekurhuleni.gov.za




YOU CAN CONTRIBUTE TO AN UNFORGETTABLE DAY IN THE PARK

1. Please don't tease the animals.
2. Please don't damage any plants or equipment.
3. Please don't litter.
4. No fishing.
5. No vehicles or bicycles allowed in the park.
6. No animals may be brought into the park.
7. Please enjoy your day!

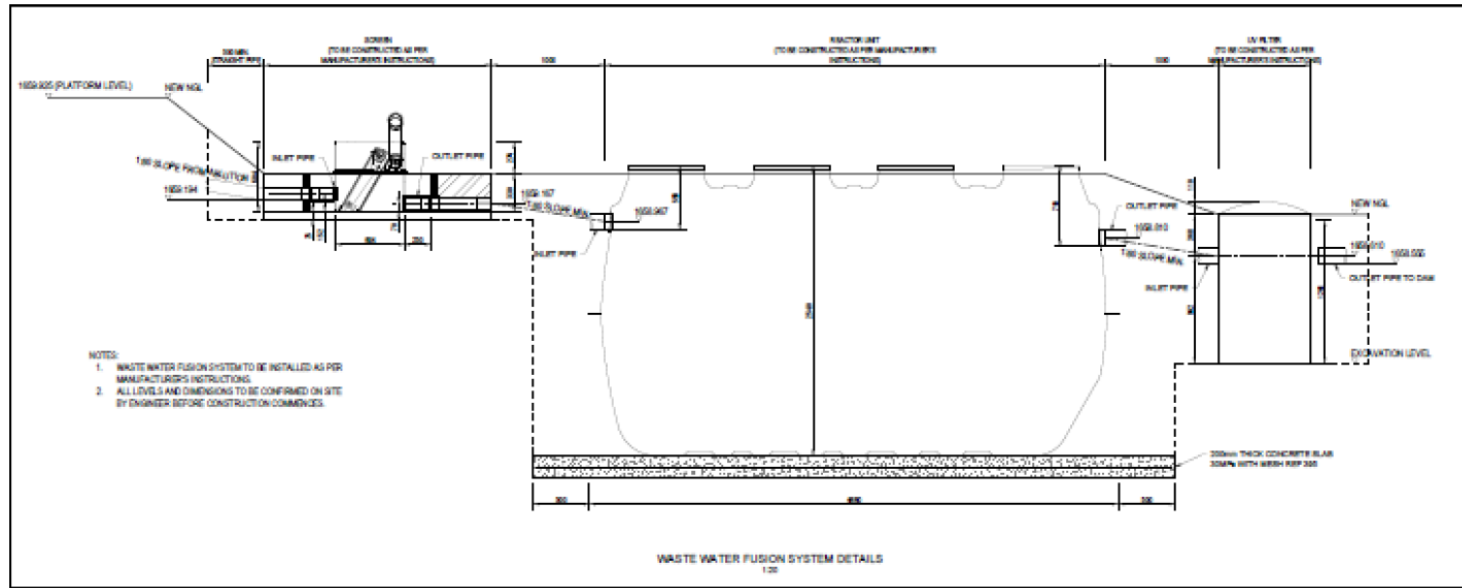
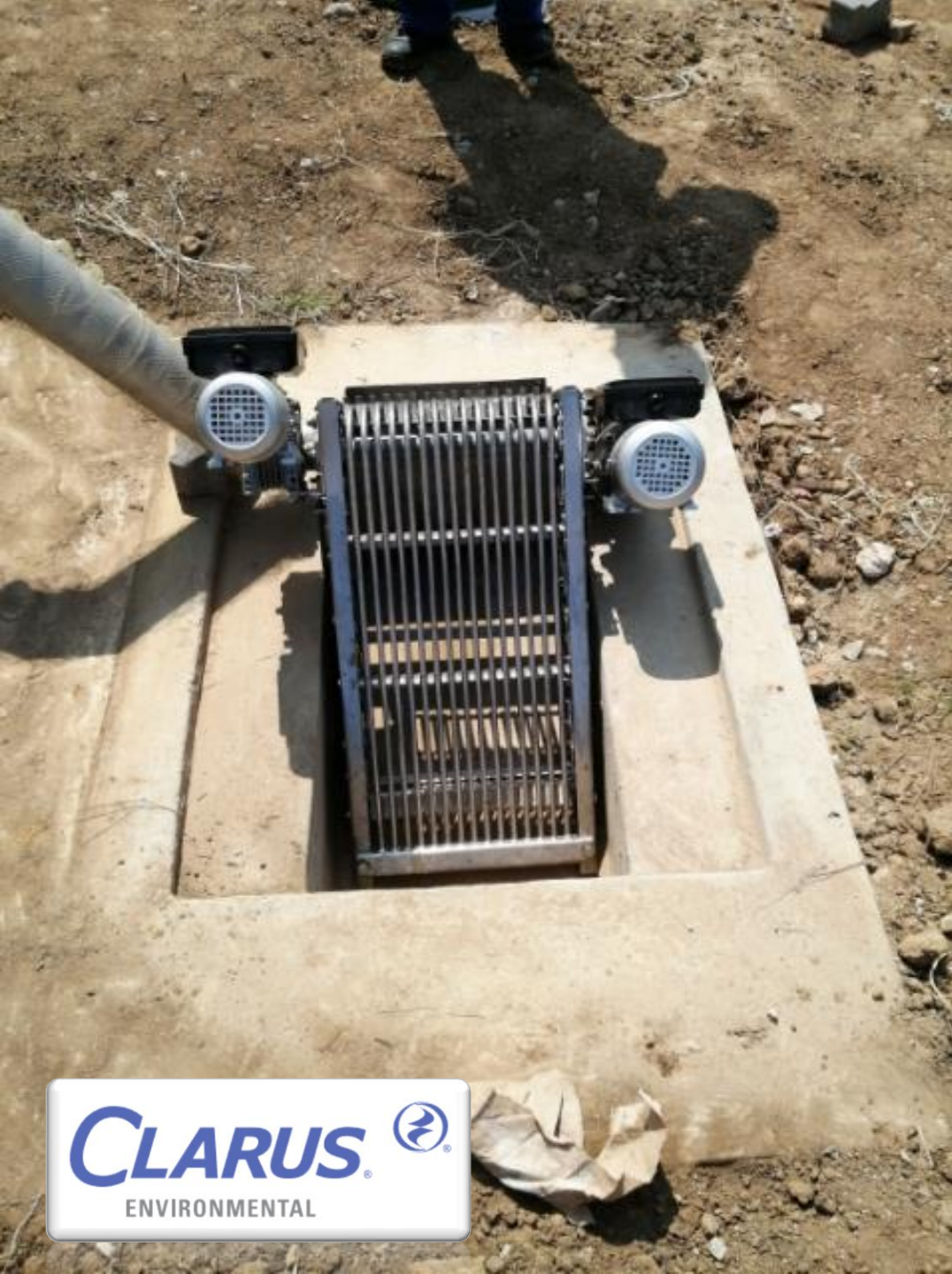


Bunny Park in Benoni gets the first stand-alone solar powered Clarus Fusion Wastewater Treatment Plant in Africa





New ablution facilities with Clarus Fusion to treat the waste water



Automated screen to remove inorganic matter





This solar installation powers the Clarus Fusion ZF4000, with UV disinfection and the automated screen



Solar and Fusion control room



Fusion is the ideal plant for solar applications due to its very low power consumption.



**Treated effluent is
discharged to the dam**



Proudly installed by:

Dries Louw

WATERBEAR TECHNOLOGIES CC.

Cell: +27 83 6767060

Email: dlouw333@telkomsa.net

Alt. waterbeartech@gmail.com

CLARUS 
ENVIRONMENTAL

