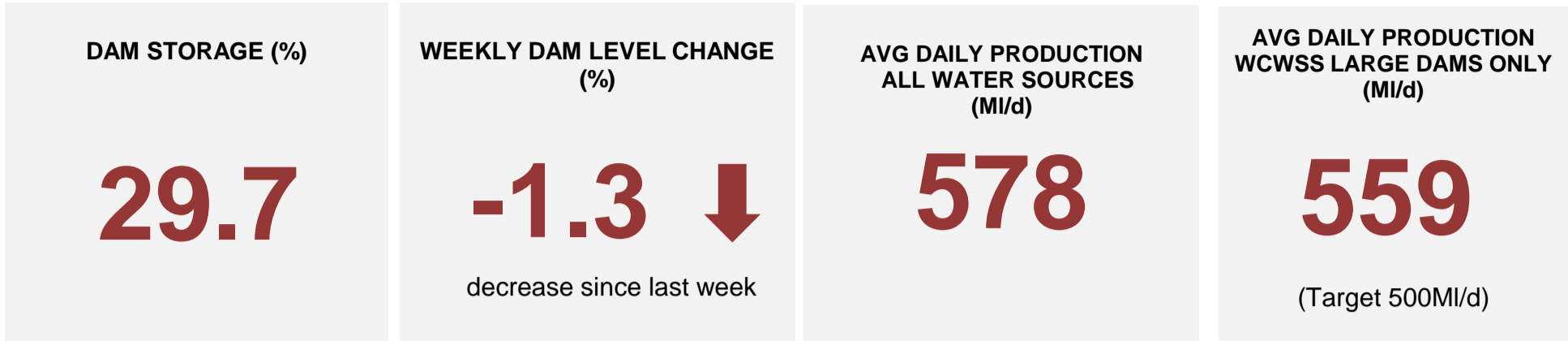
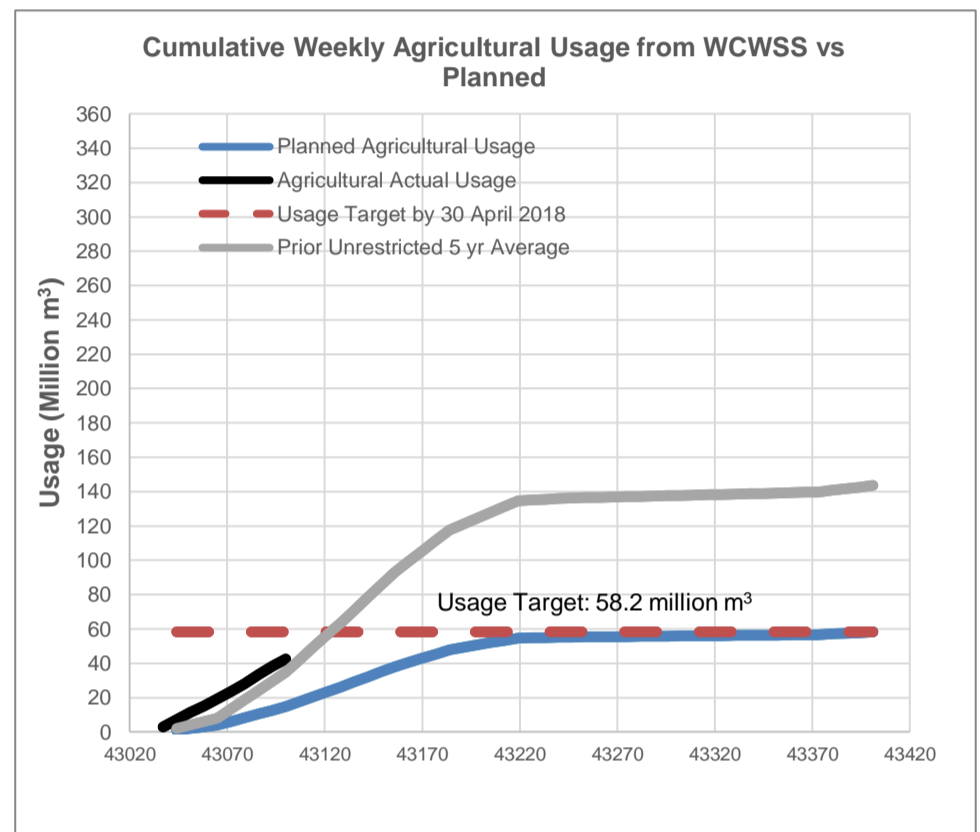
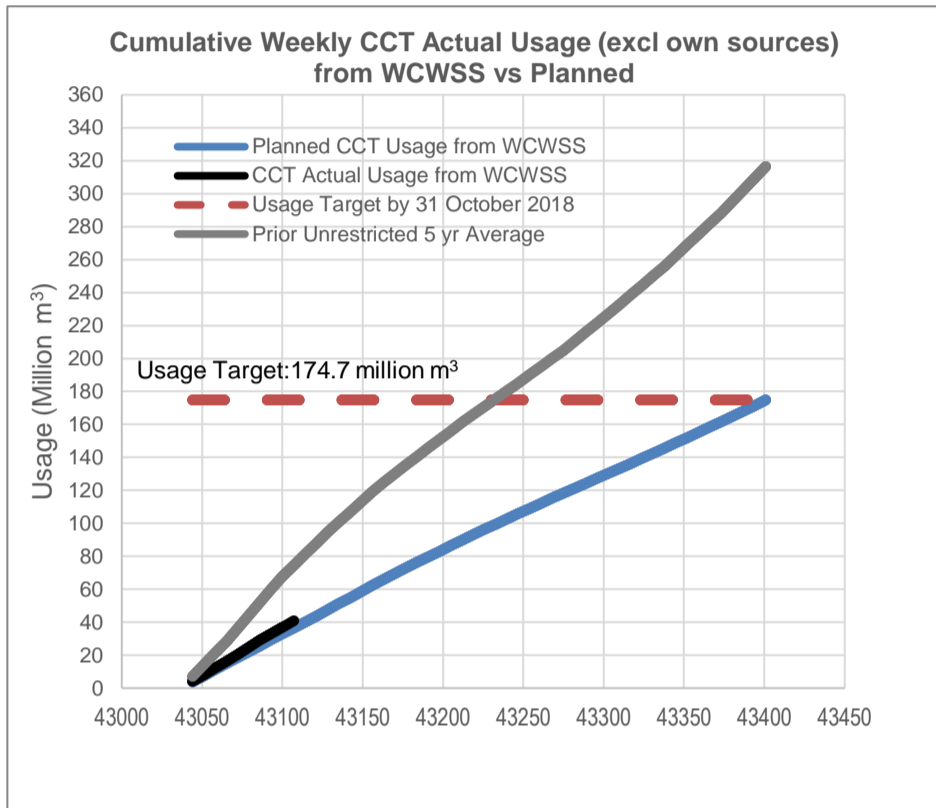


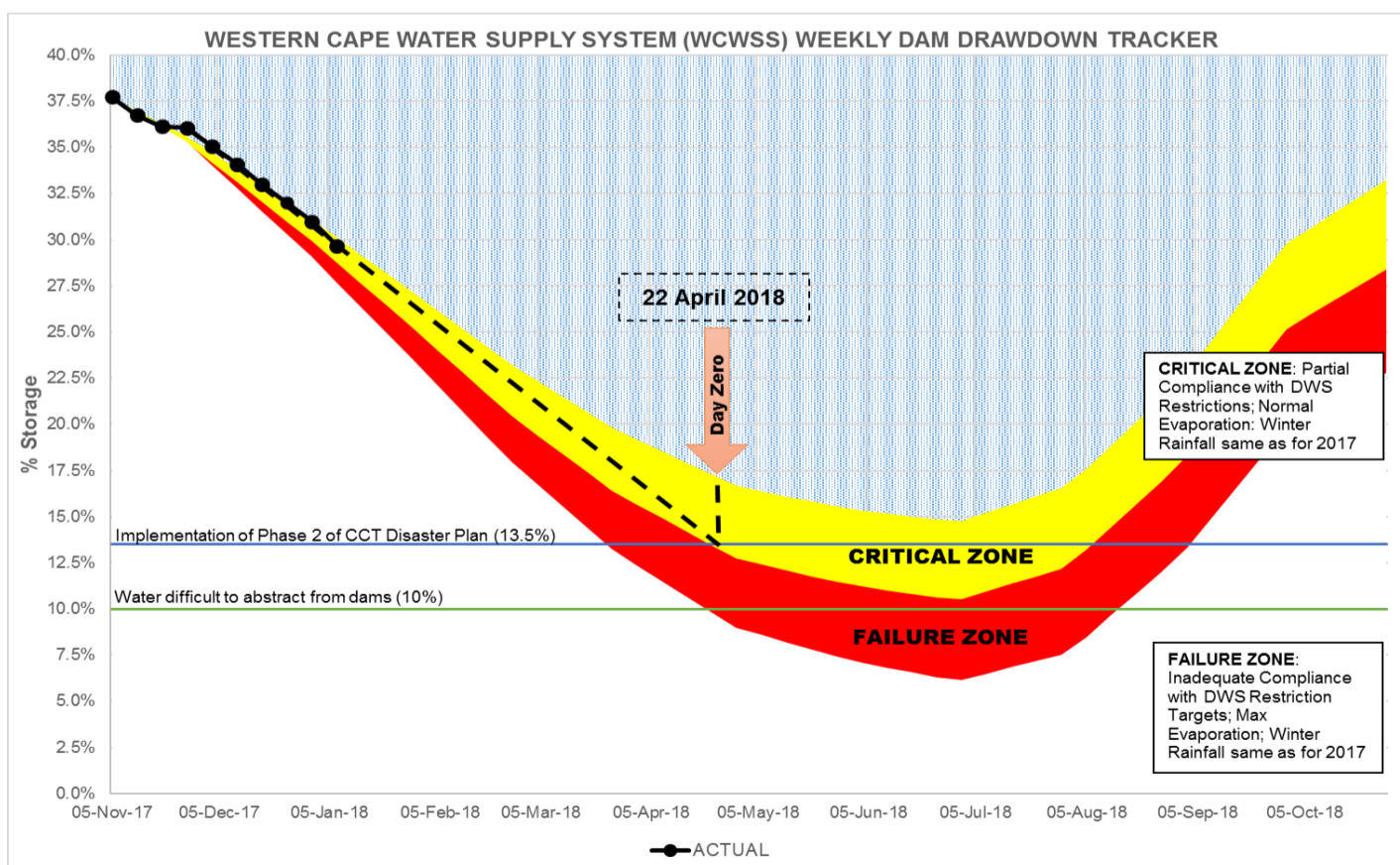
08 January 2018



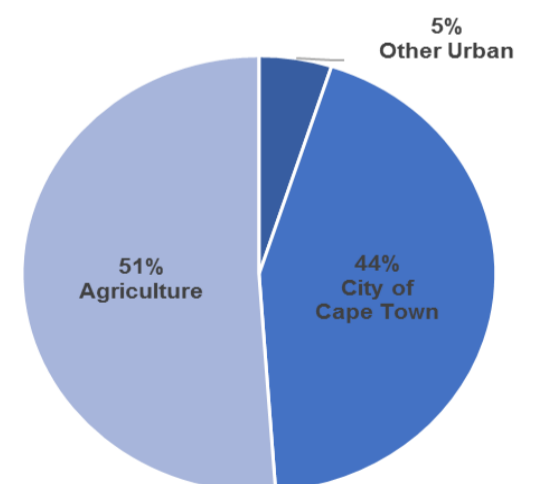
## Water Usage From Large Dams Comprising The Western Cape Water Supply System (WCWSS)



## Western Cape Water Supply System (WCWSS) Weekly Dam Drawdown Tracker



Weekly Percentage Water Usage Breakdown from Major Dams



**Disclaimer:** The data depicted above is indicative and has been based on the City's own assessment of water use from the WCWSS. It is subject to official verification by the National Department of Water and Sanitation.

## Water Stored in Major Dams Comprising Western Cape Water Supply System (WCWSS)

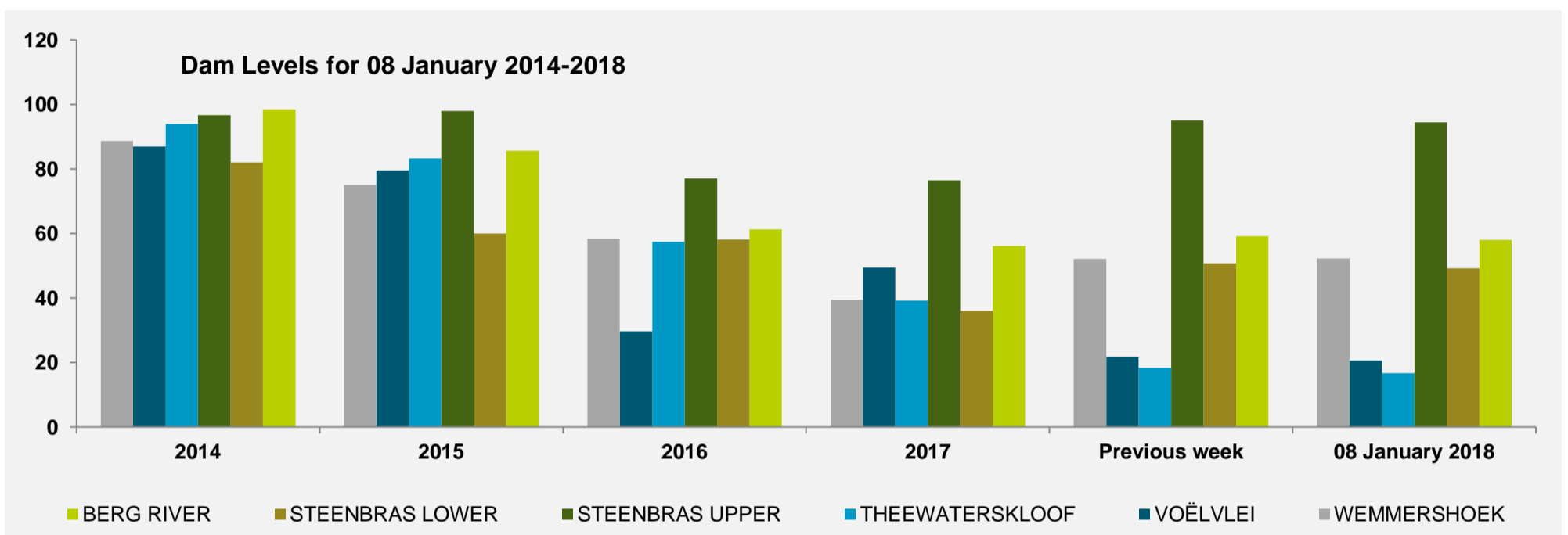
MAJOR DAMS	STORAGE						
	CAPACITY	%	%	%	%	%	%
	MI	08 January 2018	Previous week	2017	2016	2015	2014
BERG RIVER	130 010	58.0	59.2	56.2	61.3	85.6	98.5
STEENBRAS LOWER	33 517	49.2	50.8	36.0	58.1	60.0	82.0
STEENBRAS UPPER	31 767	94.5	95.1	76.5	77.1	98.0	96.7
THEEWATERSKLOOF	480 188	16.8	18.4	39.2	57.4	83.3	94.1
VOËLVLEI	164 095	20.6	21.8	49.5	29.7	79.5	87.0
WEMMERSHOEK	58 644	52.3	52.1	39.5	58.4	75.1	88.7
<b>TOTAL STORED</b>	<b>898 221</b>	<b>266 931</b>	<b>278 846</b>	<b>402 187</b>	<b>482 498</b>	<b>737 172</b>	<b>832 703</b>
<b>% STORAGE</b>		<b>29.7</b>	<b>31.0</b>	<b>44.8</b>	<b>53.7</b>	<b>82.1</b>	<b>92.7</b>

### NOTES:

1) Capacity of the major dams of the Western Cape Water Supply System is 99.6% and that of the minor dams 0.4% of the combined capacity of the major and minor dams. Kindly note that all the Major Dams show gross capacity.

2) All figures are for 08 January for each year except for those in the second column, which gives the figures for the previous week of this year.

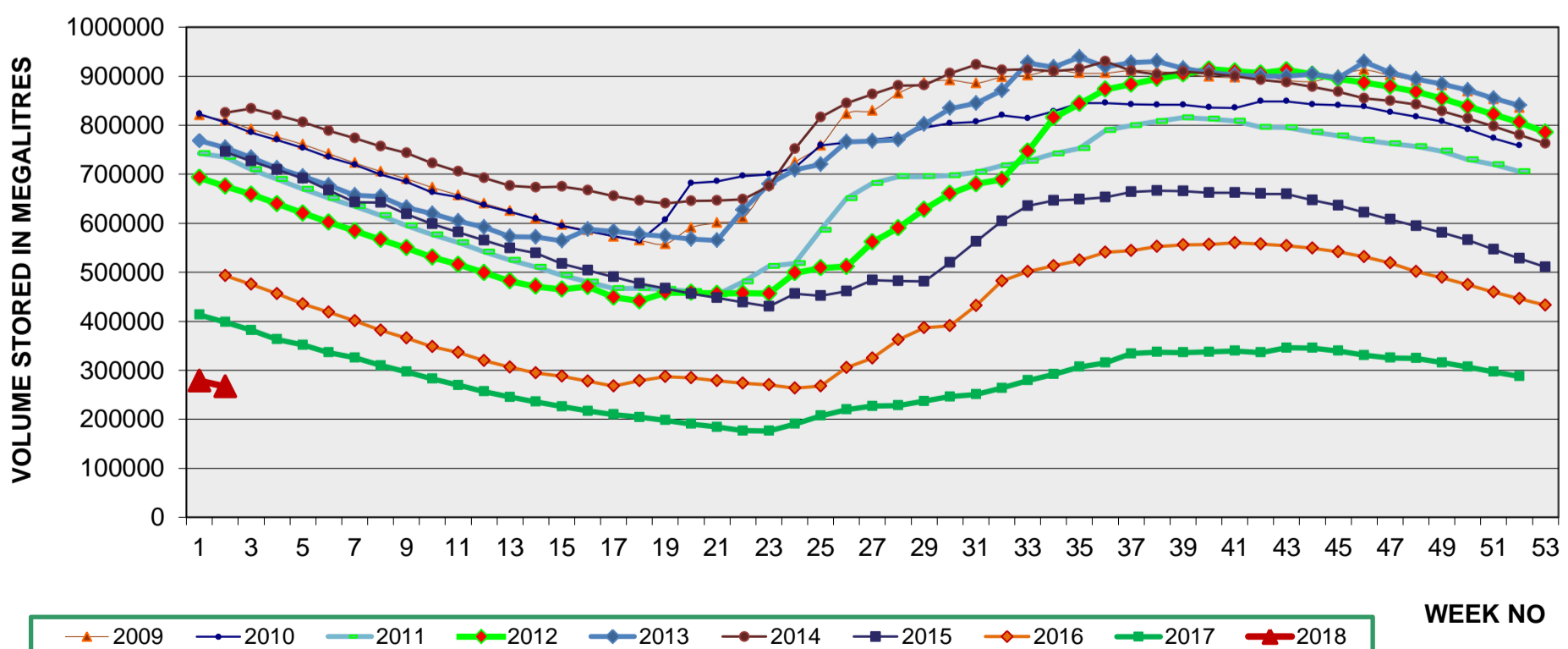
3) The last 10% of a dam's water is difficult to use, the useable water in the dam is approximately 10% less than the dam level.



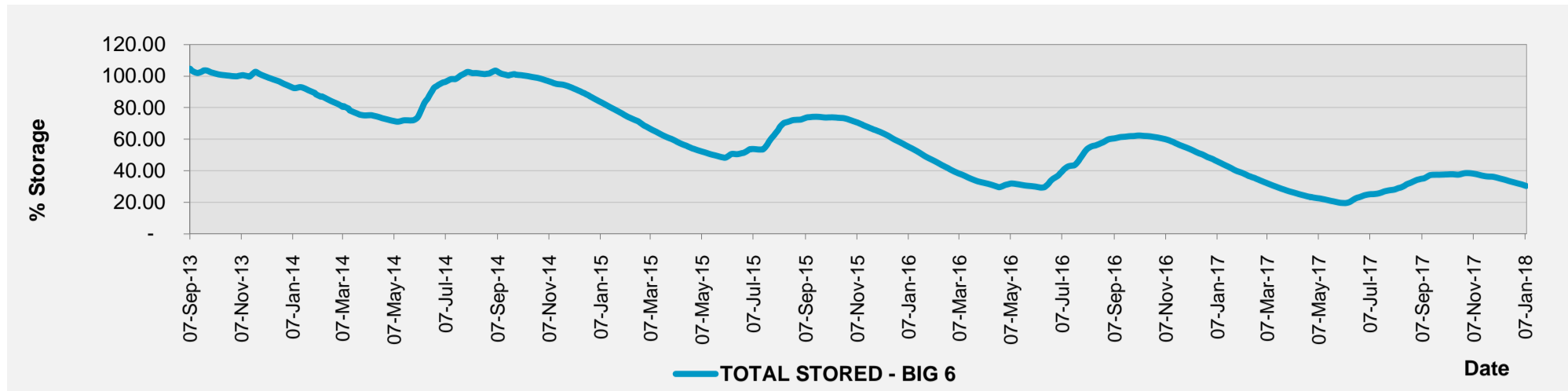
## Water Stored in Minor Dams Within Cape Town

MINOR DAMS	STORAGE						
	CAPACITY	%	%	%	%	%	%
	MI	08 January 2018	Previous week	2017	2016	2015	2014
ALEXANDRA (Table Mountain)	126	45.7	47.3	33.1	46.0	41.9	68.7
DE VILLIERS (Table Mountain)	243	79.9	80.1	68.9	71.9	64.0	97.0
HELTY-HUTCHINSON (Table Mountain)	925	97.3	97.3	98.1	97.5	46.6	97.3
KLEINPLAATS (Simon's Town)	1 368	54.2	55.7	60.0	54.9	44.2	88.9
LAND-EN-ZEEZICHT (Helderberg)	451	100.0	100.0	84.4	47.1		
LEWIS GAY (Simon's Town)	182	95.0	93.0	51.6	68.9	81.4	70.0
VICTORIA (Table Mountain)	128	93.5	93.9	89.7	72.4	85.4	92.7
WOODHEAD (Table Mountain)	954	92.5	91.9	98.5	63.8	68.5	79.5

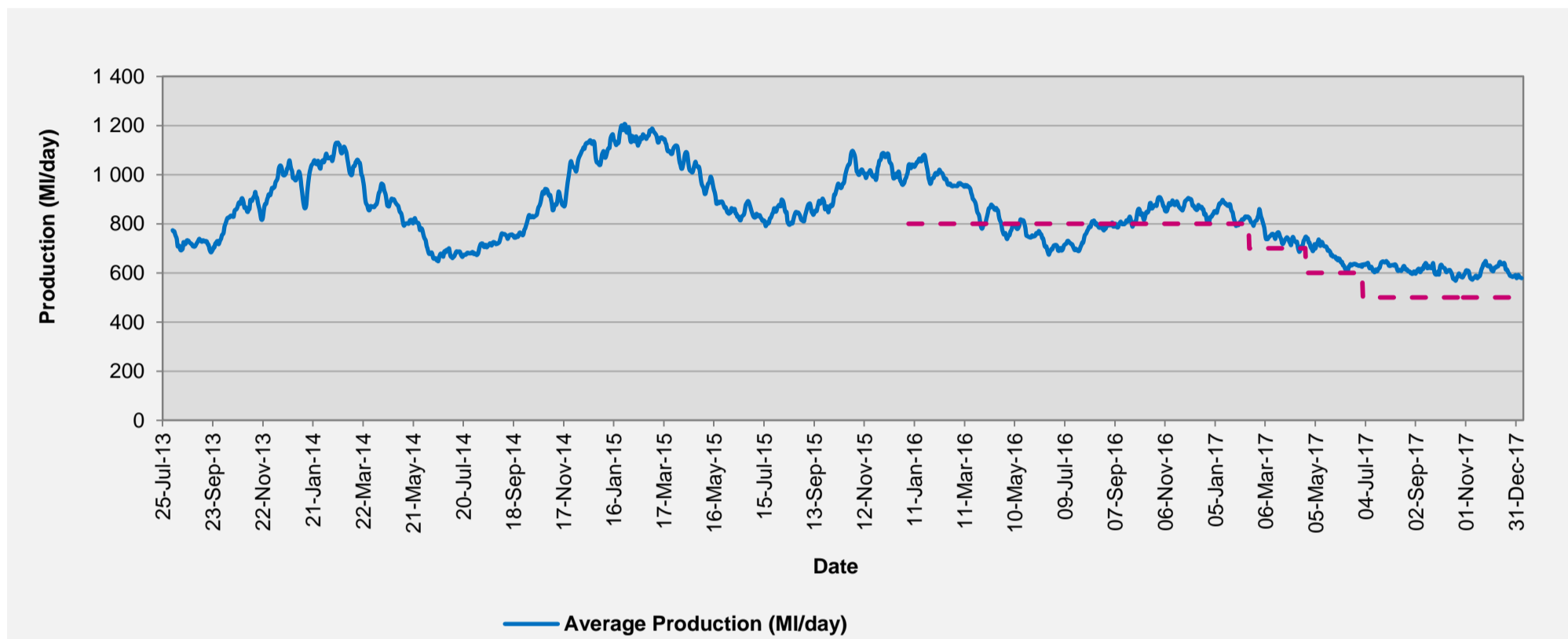
## Ten Year Graph Indicating Volume of Water Stored in Major Dams Comprising Western Cape Water Supply System (WCWSS)



## Percentage Water Stored in Major Dams (WCWSS)



## CCT Daily Average Water Production (7 Day Avg)



## CCT Water Quality Sample Pass Rate

Month	Water Quality Compliance (%)	Target (%)
Oct-16	99.62	98
Nov-16	99.59	98
Dec-16	99.65	98
Jan-17	99.63	98
Feb-17	99.64	98
Mar-17	99.67	98
Apr-17	99.67	98
May-17	99.71	98
Jun-17	99.65	98
Jul-17	99.62	98
Aug-17	99.59	98
Sep-17	99.57	98
Oct-17	99.49	98

### Notes:

This table shows CCT drinking water quality compliance according to the South African National Standard 241:2015. Compliance, measured against all prescribed chemical and microbiological components, consistently exceeds the very high CCT target of 98%. (Overall compliance percentages of continuous sampling and analysis are released on a monthly basis. The latest available is for September.)

## Rainfall

RAINFALL (mm)	01-Jan	02-Jan	03-Jan	04-Jan	05-Jan	06-Jan	07-Jan	Jan	
								Total*	LT Average
Blackheath Upper	0.0	0.0	0.0	0.0	0.0	0.8	0.6	1.4	13.2
Brooklands	0.0	0.0	0.0	0.0	0.0	4.0	5.0	9.0	30.2
Newlands	0.0	0.0	0.0	0.0	10.0	32.0	0.0	42.0	43.9
Steenbras	0.0	0.0	0.0	0.0	0.0	0.4	0.5	0.9	31.1
Table Mountain (Woodhead)	0.0	0.0	0.0	0.0	0.0	27.0		27.0	56.9
Theewaterskloof	0.0	0.0	0.0	0.0	0.0	0.0	0.7	0.7	21.2
Tygerberg	0.0	0.0	0.0	0.0	0.0	1.3	3.4	4.7	12.7
Voëlvlei	0.0	0.0	0.0	0.0	0.0	0.0	0.0	0.0	14.7
Wemmershoek	0.0	0.0	0.0	0.0	0.0	0.0	6.3	6.3	20.3
Wynberg	0.0	0.0	0.0	0.0	0.0	1.2	10.4	11.6	22.2

Notes: \*Total/cumulative rainfall for month indicated above  
LT: Long Term